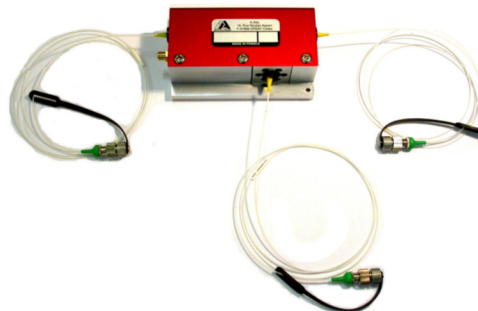


## Product Overview

This fiber pigtailed device is meant to be used for a single wavelength within their range of operation [1000-1100 nm]. It offers fiber pigtailed for both the diffracted and undiffracted orders. It can be used for intensity modulation, fixed or variable frequency shifting, pulse picking or Q-switching. In order to meet most requirements, user can select the fiber type, fiber jacket and fiber connectors among the proposed ones.

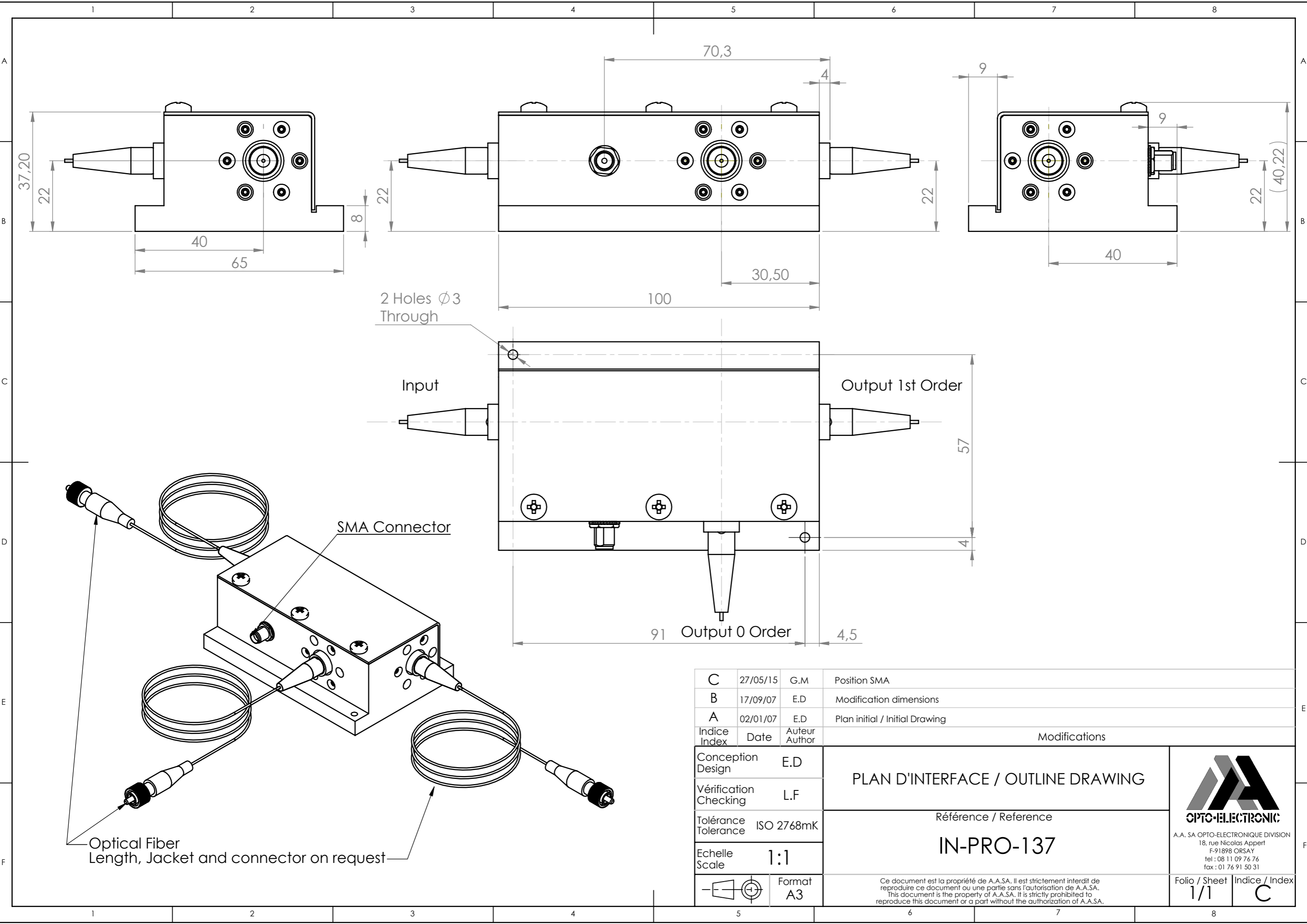
## Features

- High speed
- Diffracted and undiffracted order fiber pigtailed
- High extinction ratio
- Robust and versatile.




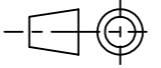
		Units	Min	Nom	Max
Material			TeO <sub>2</sub> [L]		
Optical Wavelength range (λ)		nm	1000		1100
Carrier Frequency / Frequency shift		MHz	+110 or - 110		
Insertion losses (IL)	Diffracted Order	dB		2.5	3
	Undiffracted Order			2	2.5
Input / Output Polarization			Linear (PM fibers) or Random (SM fibers)		
Rise/Fall time(T <sub>r</sub> )		ns			25
Analog Amplitude modulation bandwidth (F <sub>-3 dB</sub> )		MHz			19
Polarisation dependence losses (PDL)		dB			0.5
Static Extinction Ratio	Diffracted Order	dB	45	50	
	Undiffracted Order		10		
Optical power CW		W			0.5 or 5
Jacket type			900 μm Hytrel tubing or 3mm PVC or 3 mm Stainless Steel		
Fiber type			HI 1060 or PM 980		
Fiber connectors			FC/APC or Super FC/PC		
Pigtailed length IN/OUT		m	1		
Input impedance		Ω		50	
V.S.W.R				1.2/1	
RF Power (P)		W			2
RF Connector			SMA		
Size		mm <sup>3</sup>	100 x 65 x 39		
Weight		g		300	
Packaging			IN PRO 137		
RoHS Compliance			Yes		

$$* F_{-3dB} = \frac{0.48}{T_r}$$



Indice / Index	Date	Auteur / Author	Modifications	
C	27/05/15	G.M	Position SMA	
B	17/09/07	E.D	Modification dimensions	
A	02/01/07	E.D	Plan initial / Initial Drawing	

Conception / Design	E.D	<b>PLAN D'INTERFACE / OUTLINE DRAWING</b>	
Vérification / Checking	L.F		
Tolérance / Tolerance	ISO 2768mK		
Echelle / Scale	1:1	Référence / Reference <b>IN-PRO-137</b>	A.A. SA OPTO-ELECTRONIQUE DIVISION 18, rue Nicolas Appert F-91898 ORSAY tel : 08 11 09 76 76 fax : 01 76 91 50 31
	Format A3	Ce document est la propriété de A.A.SA. Il est strictement interdit de reproduire ce document ou une partie sans l'autorisation de A.A.SA. This document is the property of A.A.SA. It is strictly prohibited to reproduce this document or a part without the authorization of A.A.SA.	Folio / Sheet 1/1 Indice / Index C