

### Product Overview

*The MODA20X is a 20 outputs driver based on quartz oscillator which offers high frequency accuracy and stability. The 20 outputs are all phase locked. Power of the outputs is driven through an external control signal which allow user for fast AM control.*

*Embedded power amplifiers up to 3 watts per output. For higher power, AA will provide external power amplifiers.*

#### Features

- Fixed frequency
- 20 phase locked Outputs
- Analog + Digital AM controls
- RoHS

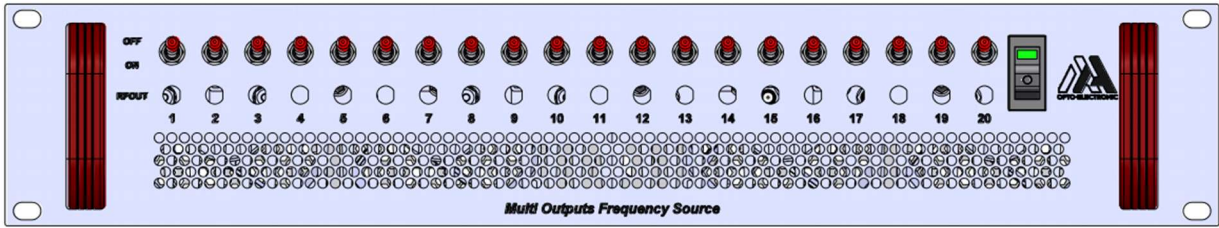
#### Applications

High stability frequency shifters, Multi modulators, low frequency shifts...

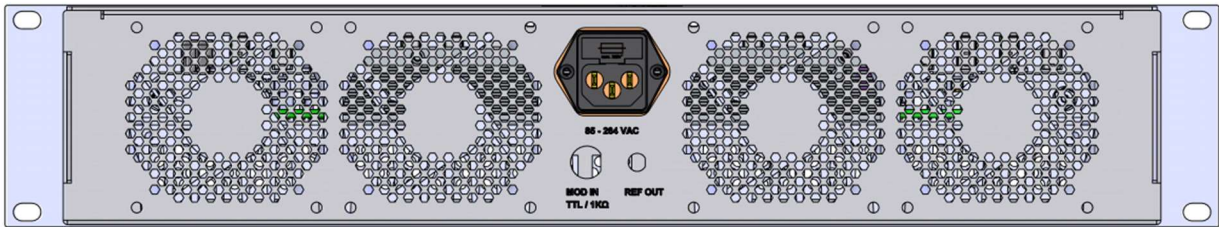


### Technical Specifications

| Parameter                              | Units           |  |
|--|-----------------|--|
| Number of outputs (X)                  |                 | 20 (phase locked)  |
| Frequency range (MHz)                  | MHz             | Fixed frequency in [10-350]  |
| Frequency Stability                    | ppm/°C          | Nom +/- 1  |
| Frequency Accuracy                     | ppm             | < 50   |
| Delay time between outputs             | ps              | Nom 200  |
| Output RF Power (@1dB compression)     | W               | Up to 3 watts/output with embedded amplifiers (more power with external amp) |
| 0 dBm output (REF OUT)                 |                 | 1 output 0 dBm (nom) for frequency monitoring                                |
| Power Supply Laboratory version        | VAC             | 110 – 230  |
| External Blanking input Control (AM)   | V               | TTL/1Kohms – common to the 20 outputs  |
| Rise Time/Fall time (10-90%) < 4 watts | ns              | < 10 @100MHz   |
| Output Impedance                       | Ω               | 50   |
| VSWR                                   |                 | < 1.5/1  |
| Extinction Ratio                       | dB              | > 45   |
| Output Connectors                      |                 | SMA  |
| Size / Weight                          | mm <sup>3</sup> | Rack 19", 2U   |
| Operating Temperature                  | °C              | 10 to 40 (max Tcase 50°C)  |
| Storage Temperature                    | °C              | -40 to +70 Non condensing  |



FACE AVANT



FACE ARRIERE

